



KONICA MINOLTA

# PageScope NetCare Device Manager

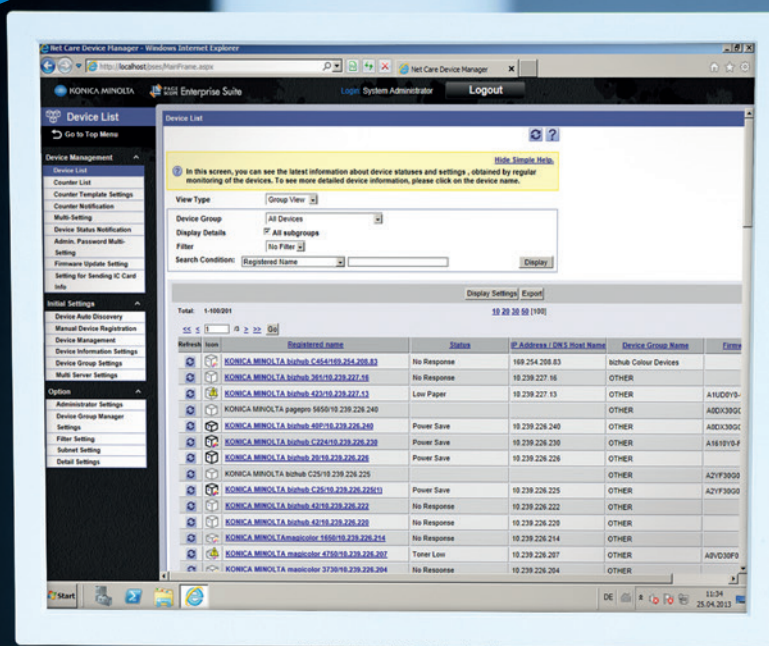
## Category



Device Management

## Characteristics

- Monitoring
- Automated services
- Reporting
- Centralisation
- Device settings





# CENTRAL MANAGING OF THE WHOLE FLEET

**NetCare Device Manager streamlines the complete management of all output devices in the corporate network. It is the core element of the PageScope Enterprise Suite, which comprises another four modules and additional options dedicated to advanced output management, follow-me printing, rule based printing, user management, cost reporting and scan management. In combination with one or more of these modules, the capabilities of the NetCare Device Manager can be attractively enhanced and extended.**

The broad scope of NetCare Device Manager covers a central device database and monitoring functionality, and provides a welcome feature set to any company's IT administrator. Fast manual as well as automated deployment of settings and a cloning feature make this the perfect tool for any print administrator in charge of a fleet of output devices. The capabilities of NetCare Device Manager are

available in full for Konica Minolta output devices. To a certain extent, printers and multifunctional devices from other manufacturers can also be accessed and monitored with this tool.

# KEY FEATURES

## Monitoring

- **Comprehensive monitoring:** This includes a detailed overview of the status of supplies, as well as warnings and error messages for all output devices within the network.
- **Customisable status reporting:** The IT administrator has full control and can automate status messages, including customisation of who should receive which type of message for specific devices or device groups.
- **Web-based interface:** At any time, the intuitive web-based user interface provides comprehensive information and an overview of all settings.

## Centralisation

- **One tool for all:** Instead of managing each device separately, NetCare Device Manager allows to access, set up and monitor all devices remotely, as device groups and if required automatically.
- **Central counter-reading and basic analysis:** This tool enables fast and simple counter checks and to display output trends over a specified period of time.
- **Automatic device discovery:** The automatic discovery of devices facilitates the quick registration of all devices matching certain parameters.
- **Automatic device grouping:** NetCare Device Manager automatically groups devices by its own criteria such as registered name, model name, device location, nickname, serial number, DNS host name, IP address, printing speed, MAC address and colour.

- **Firmware management:** The scheduled or manual deployment of the latest releases can be handled centrally, similar to other device settings.
- **Auto device configuration:** The automatic configuration of devices facilitates the automated setup of all devices belonging to a certain group.

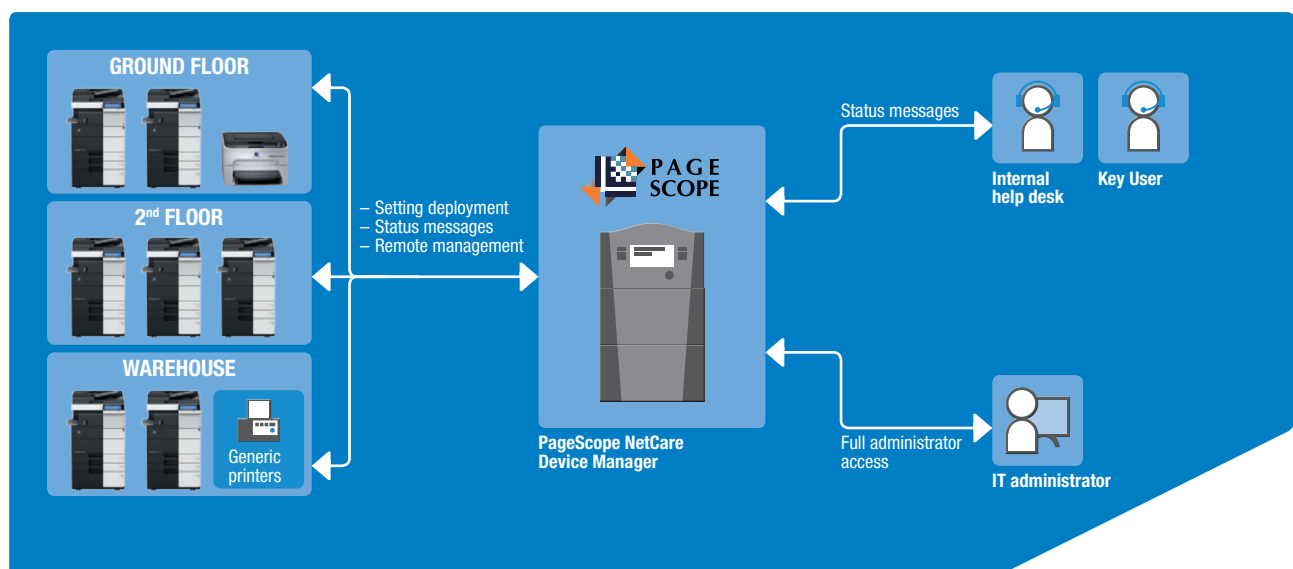
## Device settings

- **Clone setting:** Settings can be transmitted centrally from one device to an unlimited number of other devices.
- **Scheduling:** Settings can be deployed at selected times to avoid interference with working hours.
- **Templates:** For maximum efficiency and to reduce bandwidth, templates allow cloning of "all" or only those settings that should be transferred.






## Reporting

- **Simple reporting:** device status and basic counter reports are available
- **Export of reports:** reports can be send by E-Mail or stored within a preferred folder
- **Export format:** reports can conveniently be exported into various formats (XLSs, XLS, CSV, XML,TXT)
- **Scheduling function:** basic counter reporting can also be automated using the convenient scheduling function

# WORKFLOW





 <b>NetCare Device Manager</b>	Central device monitoring and deployment of settings
 <b>Account Manager</b>	Advanced output reporting and cost analysis
 <b>Authentication Manager</b>	Centralised remote management of user and access rights
 <b>My Print Manager</b>	Personal secure print management (follow-me printing)
 <b>My Panel Manager</b>	Advanced personalisation of device panels and address books

# TECHNICAL SPECIFICATIONS

## SYSTEM REQUIREMENTS

Operating systems	Windows Server 2003, Standard Edition (SP2 or later) Windows Server 2003, Standard x64 Edition (SP2 or later) Windows Server 2003, Enterprise Edition (SP2 or later) Windows Server 2003, Enterprise x64 Edition (SP2 or later) Windows Server 2003 R2, Standard Edition (SP2 or later) Windows Server 2003 R2, Standard x64 Edition (SP2 or later) Windows Server 2003 R2, Enterprise Edition (SP2 or later) Windows Server 2003 R2, Enterprise x64 Edition (SP2 or later) Windows Server 2008 Standard (SP2 or later) * Windows Server 2008 Enterprise (SP2 or later) * Windows Server 2008 Standard without Hyper-V (SP2 or later) * Windows Server 2008 Enterprise without Hyper-V (SP2 or later) * Windows Server 2012 Standard Windows Server 2012 R2 Standard Windows Vista Business (SP2 or later) * Windows Vista Enterprise (SP2 or later) * Windows Vista Ultimate (SP2 or later) * Windows 7 Professional (SP1 or later) * Windows 7 Enterprise (SP1 or later) * Windows 7 Ultimate (SP1 or later) * Windows Server 2008 R2 Standard (SP1 or later) Windows Server 2008 R2 Enterprise (SP1 or later) Windows 8 Pro * Windows 8 Enterprise * Windows 8.1 Pro * Windows 8.1 Enterprise *
Hard disk space	500 MB or higher (for initial installation)
CPU	Intel Core 2 Duo E8600 3.33 GHz or higher
.NET Framework	Microsoft .NET Framework 2.0 SP2 or later Microsoft .NET Framework 3.5 SP1 or later Microsoft .NET Framework 4.0 or later
Internet information services	Microsoft Internet Information Services 5.0 or later
Database server	Microsoft SQL Server 2005 Express/Standard/Enterprise Microsoft SQL Server 2008 Express/Standard/Enterprise Microsoft SQL Server 2008 R2 Express/Standard/Enterprise Microsoft SQL Server 2012 Express/Standard/Enterprise
Supported languages user/admin interface	English, French, Italian, German, Spanish, Dutch, Danish, Czech, Polish, Swedish, Norwegian, Swedish, Finnish, Japanese
Supported MFPs	Monitoring: Any brand's MFPs and printers with MIB support. Remote setting: Konica Minolta bizhub devices.



The support and availability of the listed specifications and functionalities varies depending on operating systems, applications and network protocols as well as network and system configurations.

\* The 32-bit (x86) and 64-bit (x64) editions of Windows are supported.